

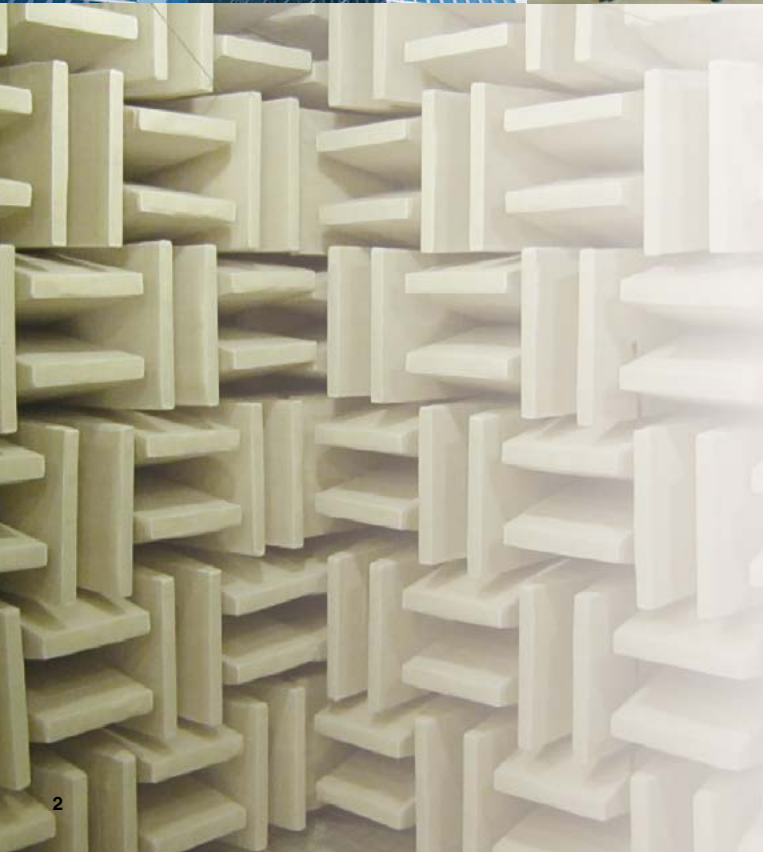
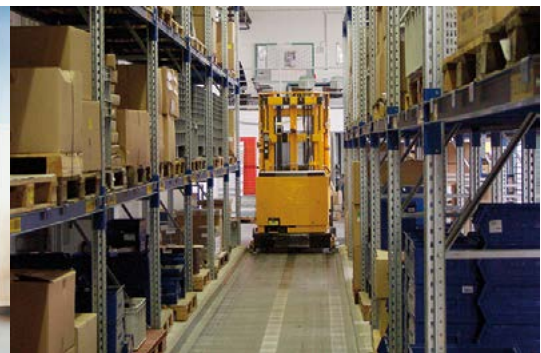


Loudspeaker

HONEYWELL— COMMERCIAL VOICE ALARM AUDIO

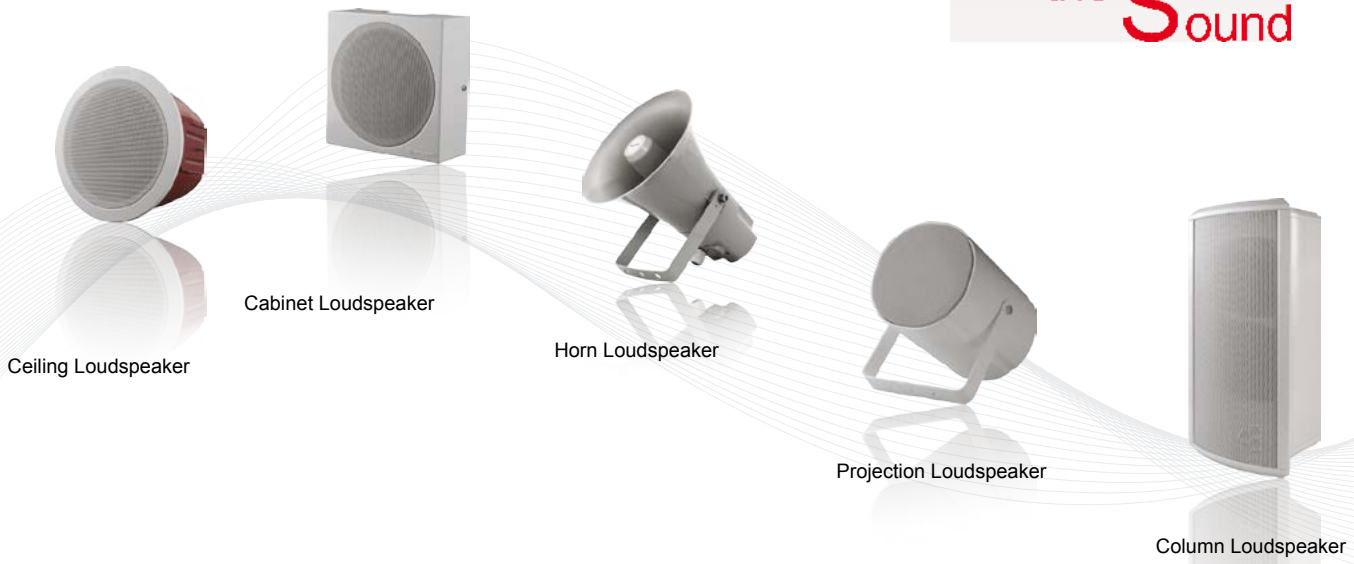
Honeywell is a Fortune 100 company that invents and manufactures technologies to address tough challenges linked to global macro trends such as safety, security, and energy. With competent teams worldwide, we have an unrelenting focus on quality, delivery, value, and technology in everything we make and do.

A strategic business unit of Honeywell Security and Fire, specialized in acoustics and public address, is founded to provide customers a better public communication management solution to all occasions where sound is used as a major intermediary to spread information and a way to improve environmental conditions. Honeywell brand also represents cutting-edge innovation, superior quality and uncompromising safety. Like every product bearing the Honeywell logo around the world, the newly born Honeywell loudspeaker inherit the same innovative spirits and unparalleled quality. No matter what you are looking for, extraordinary sound performance, easy installation and maintenance, cost effectiveness, or just one handsome looking design, Honeywell always has a choice up to your requirement.



With an experienced team of experts researching, developing and testing in our fully equipped anechoic rooms, Honeywell loudspeakers adopt internationally recognized industry standards to ensure the high reliability and excellent performance even in the extreme conditions, such as fire. Moreover, Honeywell Audiovisuals makes it possible for a perfect combination of appealing design, superior sound reproduction and easy installation that are in the best interest of our customers. Empower the sound is our commitment to provide you with a full range of loudspeakers enabling optimal acoustics in all types of commercial applications.

Honeywell



High Quality

Fire resistant — High strength ABS material complied with UL94V0 standard
Anti-corrosion — pass the 24 hours salt spray test
Higher sensitivity — magnet steel Y



High Standard

EN54-24 compliance (model number with“EN”suffix)
Non-hazardous — CE compliance
Eco-friendly materials — Adopt materials complied with RoHS standard



Easy Installation

Ergonomic design enabling faster installation to save cost

Honeywell loudspeakers have been tested in such a way as to allow the use of commercially available software such as EASE to accurately predict their performance when used in any type of application. The critical issue here is that the loudspeakers are tested in frequency response range at high sensitivity area and not at just one frequency e.g. 1 KHz. By testing the speakers over a bandwidth a realistic picture is given of the speaker's performance in a real life situation. Measurements at spot frequencies give no indication of their performance when used for speech and music systems.



Contents

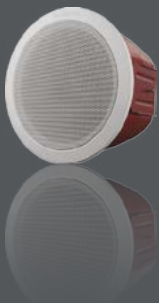
<u>01 Ceiling Loudspeaker</u>	<u>5 - 7</u>
LSC-506 (EN 54-24)	6
LSC-606 (EN 54-24)	6
582480 (EN 54-24)	6
581274	7
581263	7
<u>02 Cabinet Loudspeaker</u>	<u>8 - 11</u>
582470 (EN 54-24)	9
581277	9
581276	10
581270	10
581275	11
<u>03 Horn Loudspeaker</u>	<u>12 - 14</u>
582479 (EN 54-24)	13
581271	14
581272	14
<u>04 Projection Loudspeaker</u>	<u>15 - 17</u>
582473 (EN 54-24)	16
582474 (EN 54-24)	16
582475 (EN 54-24)	17
581258	17
<u>05 Column Loudspeaker</u>	<u>18 - 19</u>
582476 (EN 54-24)	19
582477 (EN 54-24)	19



01

Ceiling Loudspeaker

Desired interior compatibility for a better match with environments, ceiling loudspeaker features a high sound pressure level and a wide frequency response range, ensuring flawless acoustic performance



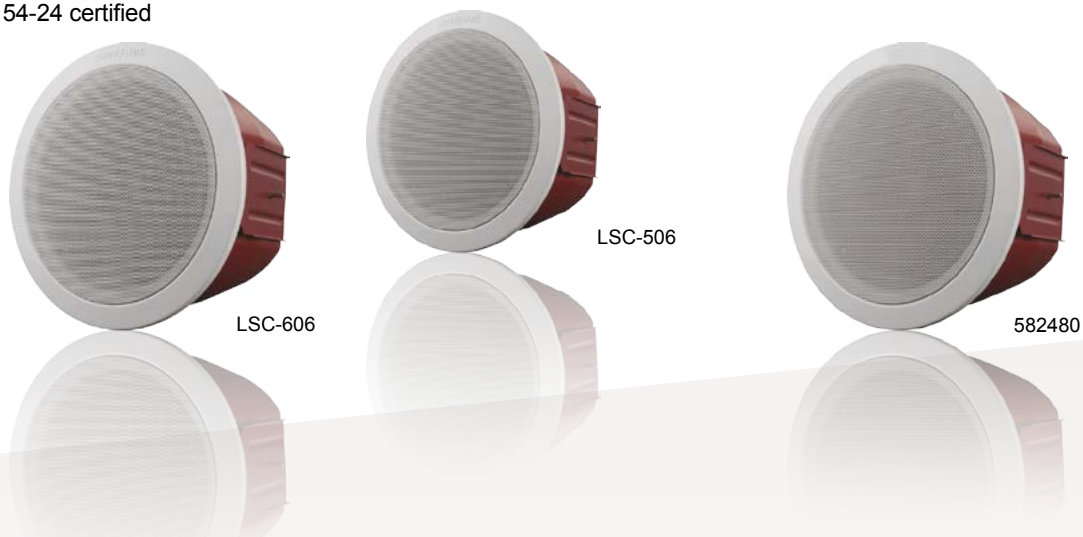
01 Ceiling Loudspeaker

 **LSC-506 (L-VCM6B/EN)** 
5" metal ceiling loudspeaker with fire dome

LSC-606 (L-VCM6A/EN)
6.5" metal ceiling loudspeaker with fire dome

582480 (L-VCM24A/EN)
6.5" 2-way metal ceiling loudspeaker with fire dome

- Superior sound and music reproduction
- The 2-way loudspeaker has a tweeter mounted in front of a woofer
- Flush mounting in ceiling and wall
- Easy to install
- Simple power setting
- Robust fire dome
- Perfect for voice evacuation system
- EN 54-24 certified



SPECIFICATIONS	LSC-506	LSC-606	582480
Max power	9 W	9 W	36 W
Rated power	6 W	6 W	24 W
Power taps (100V)	6 W / 3 W / 1.5 W / 0.75 W	6 W / 3 W / 1.5 W / 0.75 W	24 W / 12 W / 6 W / 3 W / 4 Ω
Power taps (70V)	3 W / 1.5 W / 0.75 W / 0.375 W	3 W / 1.5 W / 0.75 W / 0.375 W	12 W / 6 W / 3 W / 1.5 W / 4 Ω
Sensitivity at rated power /1W (100 Hz-10k Hz, 1m)	100 dB / 91 dB	99 dB / 91 dB	103 dB / 91 dB
Sensitivity at rated power /1W (100 Hz-10k Hz, 4m)	88 dB / 79 dB	87 dB / 79 dB	91 dB / 78 dB
Frequency range (-10 dB)	180 Hz - 20k Hz	170 Hz - 20k Hz	120 Hz - 20k Hz
Dispersion angle (1 kHz/-6 dB)	175°	170°	165°
Rated input voltage	100 V / 70 V	100 V / 70 V	100 V / 70 V
Rated impedance	1.7 kΩ / 3.3 kΩ / 6.7 kΩ / 13 kΩ	1.7 kΩ / 3.3 kΩ / 6.7 kΩ / 13 kΩ	0.42 kΩ / 0.83 kΩ / 1.67 kΩ / 3.33 kΩ / 4Ω
Connection	Ceramic Terminal	Ceramic Terminal	Ceramic Terminal
Dimensions (Ø x H)	Ø 181 mm x 129 mm	Ø 222 mm x 129 mm	Ø 226 mm x 129 mm
Hole cut-out size	Ø 155 mm	Ø 195 mm	Ø 195 mm
Diameter of speaker	5"	6.5"	6.5"
Weight	1.29 kg	1.57 kg	2.25 kg
Front grill color	White (RAL 9003)	White (RAL 9003)	White (RAL 9003)
Dome color	red (RAL 3000)	red (RAL 3000)	red (RAL 3000)
Thermal Fuse	150°C	150°C	150°C
Material	Metal	Metal	Metal

581274 (L-PCP06A)
2.5" ABS Ceiling Loudspeaker

- Optimal audio performance with dual-cone speakers
- Cone with gasket and damping effect for longer operating life
- Simple power setting
- Stylish and unobtrusive design
- High compact and fire resistant ABS plastic
- CE and RoHS compliant

SPECIFICATIONS	581274
Max power	9 W
Rated power	6 W
Power taps (100 V)	6 W / 3 W
Power taps (70 V)	3 W / 1.5 W
Sensitivity at 6W/1W (140 Hz-20k Hz, 1m)	91 dB / 84 dB
Frequency range (-10 dB)	110 Hz - 20k Hz
Dispersion angle (1 kHz/-6 dB)	150°
Rated input voltage	100 V / 70 V
Rated impedance	1.7 kΩ / 3.3 kΩ
Connection	Push-in spring connection
Dimensions (Ø x H)	Ø103 mm x 80 mm
Hole cut-out size	95 mm
Diameter of speaker	2.5"
Weight	0.42 kg
Color	white (RAL 9003)
Material	ABS



SPECIFICATIONS	581263
Max power	9 W
Rated power	6 W
Power taps (100 V)	6 W / 3 W / 1.5 W
Power taps (70 V)	3 W / 1.5 W / 0.75 W
Sensitivity at 6 W / 1 W (140 Hz-20k Hz, 1m)	96 dB / 90 dB
Frequency range (-10 dB)	120 Hz - 20k Hz
Dispersion angle (1 KHz/-6 dB)	160°
Rated input voltage	100 V / 70 V
Rated impedance	1.7 kΩ / 3.3 kΩ / 6.7 kΩ
Connection	Plastic connection
Dimensions (Ø x H)	Ø180 mm x 55 mm
Hole cut-out size	Ø150 mm
Diameter of speaker	5"
Weight	0.7 kg
Color	White (RAL 9003)
Material	Steel

581263 (L-PCM06A)
5" Metal Ceiling Loudspeaker

- Optimal audio performance with dual-cone speakers
- Cone with gasket and damping effect for longer operating life
- Higher sound pressure level
- Impressive anti-crash and anti-rusting performance
- CE and RoHS compliant



02

Cabinet Loudspeaker

Multi-purpose cabinet loudspeaker, lucid in treble while powerful in bass, delivering superb sounds effects is ideal for general indoor applications.



02 Cabinet Loudspeaker



582470 (L-VWM06A/EN)

Metal Cabinet Loudspeaker



- Intelligible voice and superior sound reproduction
- Robust metal enclosure
- Harmonious with all indoor decoration
- Simple power setting
- Easy installation
- EN 54-24 certified

SPECIFICATIONS	582470
Max power	9 W
Rated power	6 W
Power taps (100 V)	6 W / 3 W / 1.5 W / 0.75 W
Power taps (70 V)	3 W / 1.5 W / 0.75 W / 0.375 W
Sensitivity at Rated power /1W (100 Hz-10k Hz, 1 m)	98 dB / 91 dB
Sensitivity at Rated power /1W (100 Hz-10k Hz, 4 m)	86 dB / 79 dB
Frequency range (-10 dB)	300 Hz - 15k Hz
Dispersion angle (1 kHz/-6 dB)	175°(H), 174°(V)
Rated input voltage	100 V / 70 V
Rated impedance	1.7 kΩ / 3.3 kΩ / 6.7 kΩ / 13 kΩ
Connection	Ceramic terminal
Dimensions (B x H x T)	170 x 170 x 63 mm
Diameter of speaker	4"
Weight	1.56 kg
Color	White (RAL 9003)
Material	Steel
Thermal Fuse	150°C



581277 (L-PWP40A)

ABS Cabinet Loudspeaker

- High quality sound effect, lucid in treble powerful in bass
- Delicate and strong ABS enclosure
- Mounting brackets available
- Selectable 8 ohms, 70V and 100V inputs
- CE and RoHS compliant

SPECIFICATIONS	581277
Max power	60 W
Rated power	40 W
Power taps (100 V)	40W / 20W / 10W
Power taps (70 V)	20W / 10W / 5W
Sensitivity at rated power 40 W / 1W (130 Hz-20 kHz,1m)	99 dB / 84 dB
Frequency range (-10 dB)	100 Hz - 20k Hz
Dispersion angle (1 KHz/-6 dB)	160°
Rated input voltage	100 V / 70 V / 8Ω
Rated impedance	250 Ω / 500 Ω / 1 k Ω
Connection	Binding post terminals
Dimensions (B x H x T)	172 x 302 x 165 mm
Diameter of speaker	5" Woofer, 1" Tweeter
Weight	3.2 kg
Color	White (RAL 9003)
Material	ABS



02 Cabinet Loudspeaker

581276 (L-PWP10A) ABS Cabinet Loudspeaker

- Multi-cone speaker with powerful and excellent audio performance
- High-impact and fire proof ABS material
- Stylish design
- Easy installation and cost effective
- CE and RoHS compliant

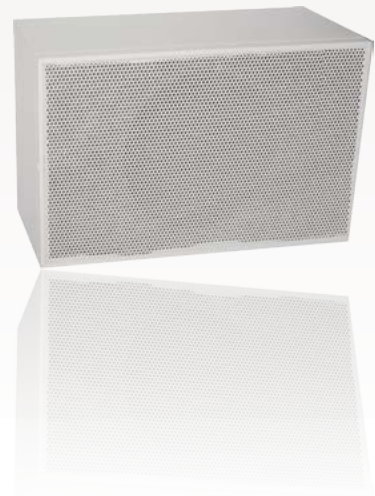


SPECIFICATIONS	581276
Max power	15 W
Rated power	10 W
Power taps (100 V)	10 W / 5 W
Power taps (70 V)	5 W / 2.5 W
Sensitivity at rated power /1 W (100 Hz-10k Hz, 1 m)	101 dB / 92 dB
Frequency range (-10 dB)	150 Hz - 17K Hz
Dispersion angle (1KHz/-6 dB)	170°
Rated input voltage	100 V / 70 V
Rated impedance	1 kΩ / 2 kΩ
Connection	Push-in spring connections
Dimensions (B x H x T)	240 x 345 x 100 mm
Diameter of speaker	6.5"
Weight	1.6 kg
Color	White (RAL 9010)
Material	ABS

581270(L-PWP06A) ABS Cabinet Loudspeaker

- Superb audio and music reproduction
- High-impact ABS cabinet
- Simple power setting
- CE and RoHS compliant

SPECIFICATIONS	581270
Max power	9 W
Rated power	6 W
Power taps (100 V)	6 W / 3 W
Power taps (70 V)	3 W / 1.5 W
Sensitivity at rated power /1W (100 Hz-10k Hz, 1m)	96 dB / 90 dB
Frequency range (-10 dB)	200 Hz - 20k Hz
Dispersion angle (1 kHz/-6 dB)	120°
Rated input voltage	100 V / 70 V
Rated impedance	1.7 kΩ / 3.3 kΩ
Connection	Cable
Dimensions (B x H x T)	260 x 162 x 77 mm
Diameter of speaker	5.5"
Weight	1 kg
Color	White (RAL 9010)
Material	ABS





581275 (L-PWP03A)

ABS Moisture-proof Cabinet Loudspeaker

- Water-proof cone
- Compact and modern design
- High strength and fire proof ABS enclosure
- Easy installation and cost effective
- CE and RoHS compliant



SPECIFICATIONS	581275
Max power	5 W
Rated power	3 W
Power taps (100 V)	3 W / 1.5 W
Power taps (70 V)	1.5 W / 0.75 W
Sensitivity at rated power /1 W (100 Hz-10k Hz, 1 m)	94 dB / 88 dB
Frequency range (-10 dB)	300 Hz - 6kHz
Dispersion angle (1KHz/-6 dB)	180°
Rated input voltage	100 V / 70 V
Rated impedance	3.3 kΩ / 6.7 kΩ
Connection	Push-in spring connections
Dimensions (B x H x T)	120 x 130 x 60 mm
Diameter of speaker	3"
Weight	0.4 kg
Color	White (RAL 9003)
Material	ABS

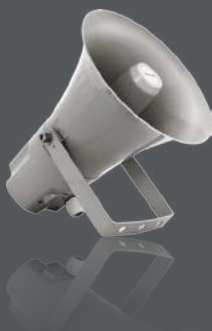




03

Horn Loudspeaker

Conforming to IP65/66 standard, the high quality horn loudspeaker is applicable in harsh conditions requiring an entire protection of dust intrusion and water penetration.



03 Horn Loudspeaker



582479 (L-VHP15A/EN)

ABS Horn Loudspeaker



- Intelligible voice and superior sound reproduction
- Low profile design blends easily into any outdoor applications
- Direct cable connection without junction box
- Ergonomic and stylish design
- High-strength UV resistive UL94V0 ABS housing
- EN54 part 24 certified



SPECIFICATIONS	582479
Max power	25 W
Rated power	15 W
Power taps (100 V)	15 W / 10 W / 5 W / 8 Ω
Power taps (70 V)	7.5 W / 5 W / 2.5 W / 8 Ω
Sensitivity at rated power /1 W (100 Hz-10k Hz, 1 m)	117 dB / 105 dB
Sensitivity at rated power /1 W (100 Hz-10k Hz, 4 m)	105 dB / 93 dB
Frequency range (-10 dB)	300 Hz - 16k Hz
Dispersion angle (1 KHz/-6 dB)	124°(H), 143°(V)
Rated input voltage	100 V / 70 V
Rated impedance	667 Ω / 1 kΩ / 2 kΩ
Connection	Fire resistant Cable
Dimensions (B x H x T)	Ø 213 mm x 265 mm
Weight	2.05 kg
Color	Gray (RAL 7035)
Material	ABS
Thermal Fuse	150°C

03 Horn Loudspeaker



581271 (L-PHP15A)

ABS Horn Loudspeaker

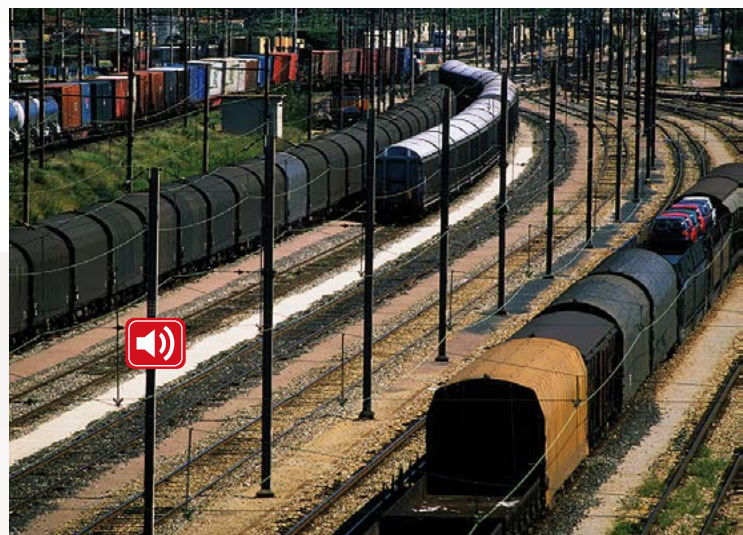


- Low profile appearance
- Superior voice reproduction
- Water and dust proof, IP66 compliant
- Easy for installation
- CE and RoHS compliant



SPECIFICATIONS

SPECIFICATIONS	581271
Max power	25 W
Rated power	15 W
Power taps (100 V)	15 W / 7.5 W
Power taps (70 V)	7.5 W / 3.75 W
Sensitivity at rated power /1 W (100 Hz-10k Hz, 1 m)	115 dB / 103 dB
Frequency range (-10 dB)	350 Hz ~ 8kHz
Dispersion angle (1 kHz/-6 dB)	140°
Rated input voltage	100 V / 70 V
Rated impedance	667Ω / 1.3 kΩ
Connection	Cable
Dimensions (B x H x T)	225 mm x 165 mm x 240 mm
Weight	1.38 kg
Color	white (RAL9003)
Material	ABS



581272 (L-PHP30A)

ABS Horn Loudspeaker



- Low profile appearance
- Superior voice reproduction effect
- Water and dust proof, IP66 compliant
- Easy for installation
- CE and RoHS compliant

SPECIFICATIONS

SPECIFICATIONS	581272
Max power	45 W
Rated power	30 W
Power taps (100V)	30 W / 15 W
Power taps (70V)	15 W / 7.5 W
Sensitivity at Rated power /1W (100 Hz-10k Hz, 1m)	116 dB / 104 dB
Frequency range (-10 dB)	300 Hz - 10k Hz
Dispersion angle (1 kHz/-6 dB)	140°
Rated input voltage	100 V / 70 V
Rated impedance	333 Ω / 667 Ω
Connection	Cable
Dimensions (B x H x T)	285 x 205 x 290 mm
Weight	2.1 kg
Color	white (RAL 9003)
Material	ABS






04

Projection Loudspeaker

Eligible to various public address applications, projection loudspeaker offers extraordinary audio performance and music reproduction.



04 Projection Loudspeaker


582473 (L-VJM10A/EN)
582474 (L-VJM20A/EN)
 Aluminum Unidirectional
 Projection Loudspeaker



- Intelligible voice and superior sound reproduction
- Ceiling or wall mount
- Meets virtually any outdoor requirements
- IP65 compliant
- EN54-24 certified



SPECIFICATIONS	582473	582474
Max power	20 W	30 W
Rated power	10 W	20 W
Power taps (100 V)	10 W / 5 W / 2.5 W / 1.25 W	20 W / 10 W / 5 W / 2.5 W
Sensitivity at rated power / 1 W (100 Hz-10k Hz, 1 m)	98 dB / 89 dB	101 dB / 89 dB
Sensitivity at rated power / 1 W (100 Hz-10k Hz, 4 m)	86 dB / 77 dB	89 dB/77 dB
Frequency range (-10 dB)	150 Hz - 20 kHz	150 Hz - 20 kHz
Dispersion angle (1 kHz/-6 dB)	211°(H), 209°(V)	214°(H), 209°(V)
Rated input voltage	100 V / 70 V	100 V / 70 V
Rated impedance	1 kΩ / 2 kΩ / 4 kΩ / 8 kΩ	500Ω / 1 kΩ / 2 kΩ / 4 kΩ
Connection	Fire resistant cable	Fire resistant cable
Dimensions (D x T)	Ø 140 x 195 mm	Ø 140 x 195 mm
Weight	2.62 kg	2.65 kg
Color	white (RAL 9003)	white (RAL 9003)
Material	Aluminium	Aluminium

582475 (L-VBM20A/EN) 
Aluminum Bidirectional Projection Loudspeaker

- Intelligible voice and superior sound reproduction
- Ceiling or wall mount
- Meets virtually any outdoor requirements
- IP65 compliant
- EN54-24 certified



SPECIFICATIONS	582475
Max power	30 W
Rated power	20 W (10 W×2)
Power taps (100V)	20 W / 10 W / 5 W / 2.5 W
Sensitivity at rated power / 1 W (100 Hz-10 kHz, 1 m)	99 dB / 87 dB
Sensitivity at rated power / 1 W (100 Hz-10 kHz, 4 m)	87 dB / 75 dB
Frequency range (-10 dB)	150 Hz - 20K Hz
Dispersion angle (1 kHz/-6 dB)	161°(H), 162°(V)
Rated input voltage	100 V / 70 V
Rated impedance	500Ω / 1 kΩ / 2 kΩ / 4 kΩ
Connection	Fire resistant cable
Dimensions (DxT)	Ø 140 x 195 mm
Weight	3,23 kg
Color	white (RAL 9003)
Material	Aluminium

581258 (L-PJP20B)
ABS Projection Loudspeaker

- Powerful and intelligible audio performance
- Stylish and unobtrusive design
- High impact fire resistant ABS enclosure
- Completely water resistant
- Easy installation and cost effective
- CE and RoHS compliant



SPECIFICATIONS	581258
Max power	40 W
Rated power	20 W
Power taps (100 V)	20 W / 10 W / 5 W
Sensitivity at rated power / 1 W (100 Hz - 10 kHz, 1m)	112 dB / 92 dB
Frequency range (-10 dB)	140 Hz ~ 20k Hz
Dispersion angle (1 kHz/-6 dB)	150°
Rated input voltage	100 V
Rated impedance	500 Ω / 1 k Ω / 2 kΩ
Connection	Cable
Dimensions (B x H x T)	Ø138 mm x 201 mm
Weight	1.56 kg
Color	White (RAL 9003)
Material	ABS



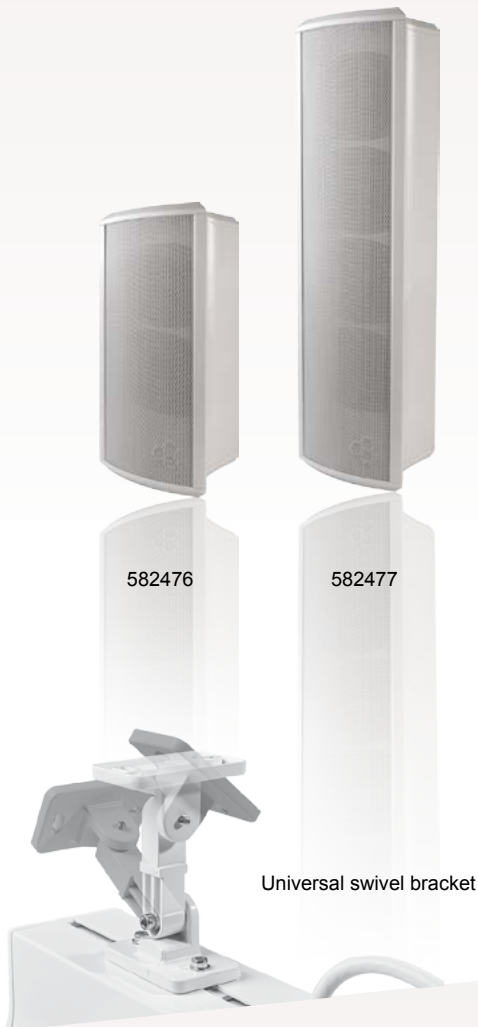
05


Column Loudspeaker

Honeywell outdoor column loudspeakers featuring wide dispersion angle and excellent acoustic performance fit in various applications. Its solid and durable enclosure makes it withstand any harsh environment.



05 Column Loudspeaker




582476 (L-VOM20A/EN)
582477 (L-VOM40A/EN)
 Aluminum Outdoor Column Loudspeaker



- Intelligible voice and superior sound reproduction
- Robust aluminum housing
- Supplied with universal swivel bracket for easy angle adjustment
- Adapts to extreme environment
- EN54-24 certified
- P66 compliant



SPECIFICATIONS	582476	582477
Max power	30 W	60 W
Rated power	20 W (10 W x 2)	40 W (10 W x 4)
Power taps (100 V)	20 W / 10 W / 5 W / 2.5 W	40 W / 20 W / 10 W / 5 W
Sensitivity at rated power /1W (100 Hz-10k Hz, 1m)	103 dB / 91 dB	108 dB / 94 dB
Sensitivity at rated power /1W (100 Hz-10k Hz, 4m)	91 dB / 79 dB	96 dB / 82 dB
Frequency range (-10 dB)	300 Hz - 15 kHz	300 Hz - 15 kHz
Dispersion angle (1 kHz/-6 dB)	146°(H), 87°(V)	147°(H), 48°(V)
Rated input voltage	100 V / 70 V	100 V / 70 V
Rated impedance	500 Ω / 1 kΩ / 2 kΩ / 4 kΩ	250Ω / 500Ω / 1 kΩ / 2 kΩ
Connection	Fire resistant cable	Fire resistant cable
Dimensions (Ø x H)	165 x 150 x 344 mm	165 x 150 x 568 mm
Weight	3.75 kg	5.75 kg
Color	white (RAL 9003)	white (RAL 9003)
Diameter of speaker	4"x2	4"x4
Material	Aluminium	Aluminium

A strategic business unit of Honeywell Security and Fire is specialized in designing, developing, manufacturing and selling public address and voice alarm systems. Being an expert in acoustic excellence, our mission statement is to provide our customers who need sound and voice propagation a better, safer, and a more efficient public address management system and solution.

As a global leading manufacturer, Honeywell is always in pursuit of innovations and driven by the most cutting edge technologies. With an experienced team of R&D elites working in world-class laboratories, Honeywell implements the most efficient operation and strictest quality control system in the industry. Our advanced design concepts focus on networkability, modularization, and user-friendliness. "Empower the Sound" is our promise to create a greater value to our customers around the world.

Novar GmbH a Honeywell Company

Dieselstr. 2, 41469 Neuss, Germany

Phone: +49 2131 40615-600

Fax: +49 2131 40615-606

www.esser-systems.com

info@esser-systems.com

Honeywell

Part No. xxxxxx

December 2015

Technical information is subject to change without notice!

© 2015 Honeywell International Inc.